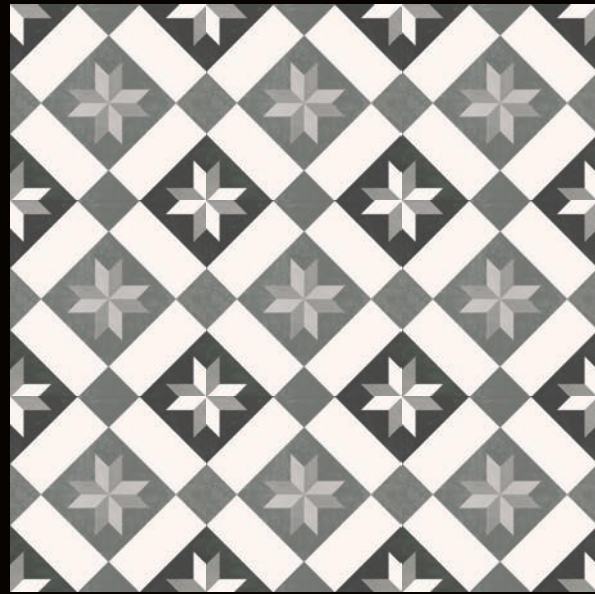


stage



130046
STAGE COZY BLEND
20x20 / 8"x8"
COD.81 □



COMP.N1



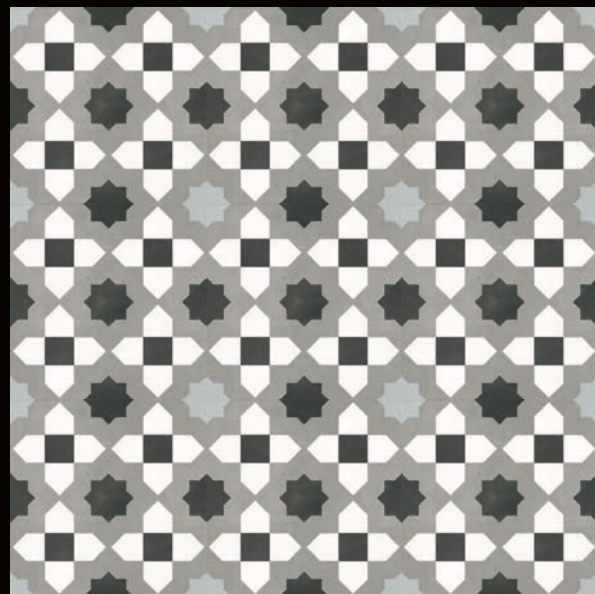
130042
STAGE COZY No.1
20x20 / 8"x8"
COD.81 □



COMP.N4



130045
STAGE COZY No.4
20x20 / 8"x8"
COD.81 □



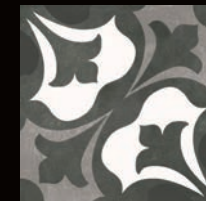
COMP.N2



130043
STAGE COZY No.2
20x20 / 8"x8"
COD.81 □



COMP.N5



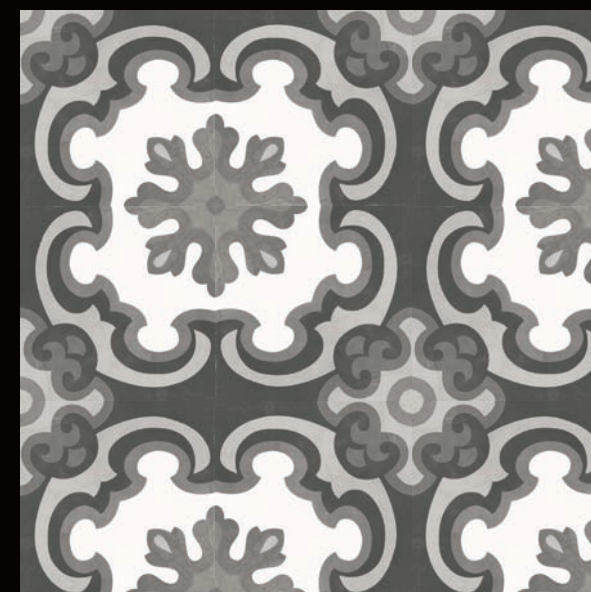
130047
STAGE COZY No.5
20x20 / 8"x8"
COD.81 □



COMP.N3



130044
STAGE COZY No.3
20x20 / 8"x8"
COD.81 □



COMP.N6



130048
STAGE COZY No.6
20x20 / 8"x8"
COD.81 □



130041
STAGE HIPSTER BLEND
20x20 / 8"x8"
COD.81 □



COMP.N1



130037
STAGE HIPSTER No.1
20x20 / 8"x8"
COD.81 □



COMP.N4



130040
STAGE HIPSTER No.4
20x20 / 8"x8"
COD.81 □



COMP.N2



130038
STAGE HIPSTER No.2
20x20 / 8"x8"
COD.81 □



COMP.N5



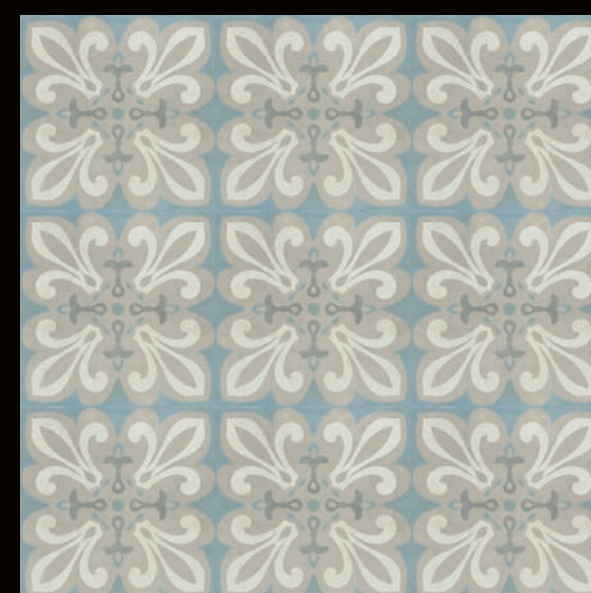
130049
STAGE HIPSTER No.5
20x20 / 8"x8"
COD.81 □



COMP.N3



130039
STAGE HIPSTER No.3
20x20 / 8"x8"
COD.81 □



COMP.N6



130050
STAGE HIPSTER No.6
20x20 / 8"x8"
COD.81 □

SHABBY CHIC



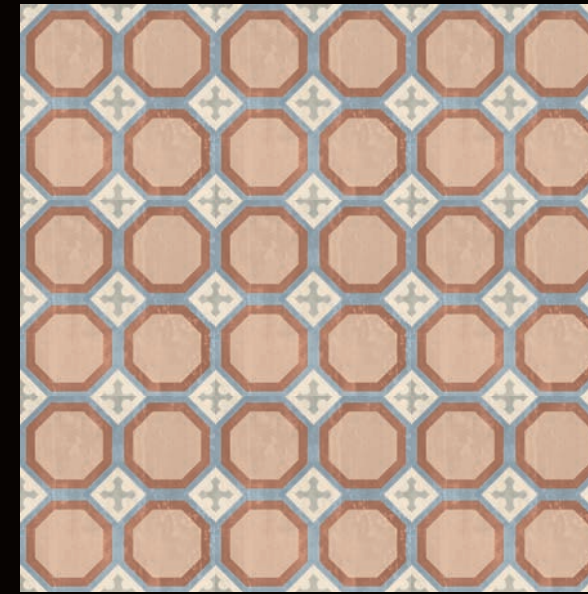
130036
STAGE SHABBY CHIC BLEND
20x20 / 8"x8"
COD.81 □



COMP.N1



130032
STAGE SHABBY CHIC No.1
20x20 / 8"x8"
COD.81 □



COMP.N4



130035
STAGE SHABBY CHIC No.4
20x20 / 8"x8"
COD.81 □



COMP.N2



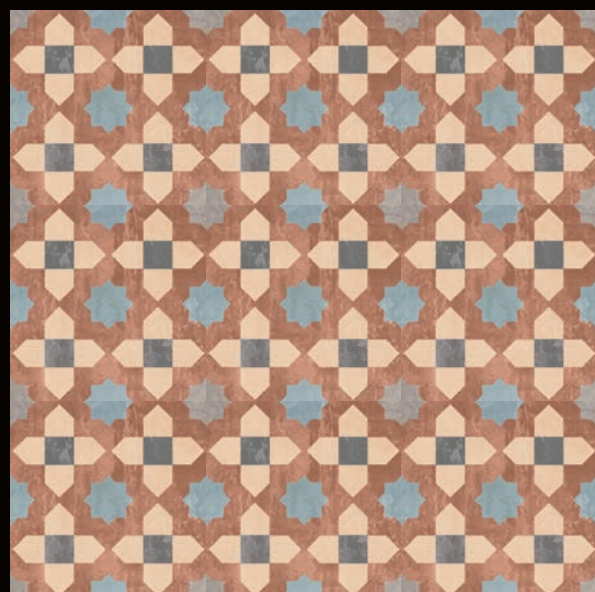
130033
STAGE SHABBY CHIC No.2
20x20 / 8"x8"
COD.81 □



COMP.N5



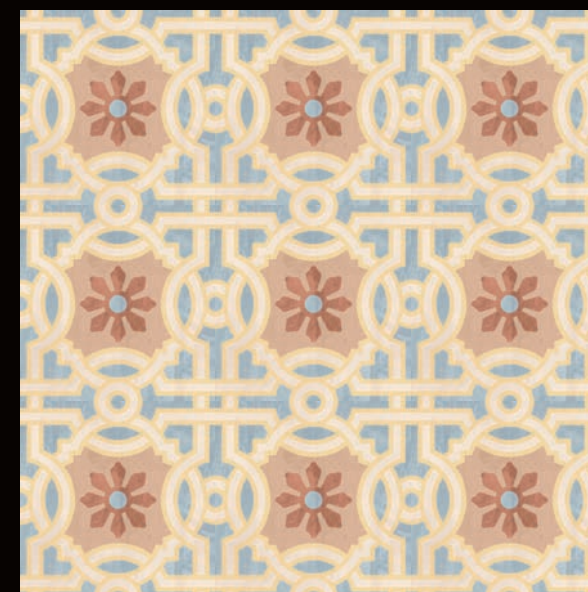
130051
STAGE SHABBY CHIC No.5
20x20 / 8"x8"
COD.81 □



COMP.N3



130034
STAGE SHABBY CHIC No.3
20x20 / 8"x8"
COD.81 □



COMP.N6







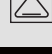
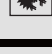



130052
STAGE SHABBY CHIC No.6
20x20 / 8"x8"
COD.81 □

CARATTERISTICHE DI QUALITÀ
Quality characteristics
Caractéristiques de qualité
Qualitätseigenschaften

NORMA
Norm
Norme
Norme

REQUISITO NORMA
Required standards
Valeur prescrite selon la norme
Normvorgabe


RISULTATO
Result
Résultat
Ergebnis

| | | | | |
|---|---|-----------------|---|--|
|  | Assorbimento d'acqua Water absorption of the body Absorption d'eau de support Wasseraufnahme des scherbens | | ≤ 0,5 | Conforme Conformity Conforme Gemäss |
|  | Resistenza a flessione Breaking strenght Résistance à la flexion Biegefestigkeit | ISO 10545-4 | ≥ 35 N/mm ² | Conforme Conformity Conforme Gemäss |
|  | Resistenza all'abrasione Abrasion resistance Resistance a l'abrasion Abriebbestaendigkeit | ISO 10545-7 | | PEI IV |
|  | Resistenza al gelo Frost resistance Résistance au gel Frostbeständigkeit | ISO 10545-12 | Nessun campione deve presentare rotture o alterazioni apprezzabili alla superficie No samples must show ruptures or noticeable surface alteration Aucuns enchantions doit présenter ruptures ou altérations appréciables de la surface Keines der Muster sollte Risse oder sichtbare Fehler der Oberflaeche zeigen | Conforme Conformity Conforme Gemäss |
|  | Resistenza all'attacco chimico Chemical resistance Résistance à l'attaque chimique Beständigkeit gegen chemikalien | ISO 10545-13 | Nessun campione deve presentare alterazioni visibili all'attacco chimico No samples must show visible signs of chemical attack Aucuns enchantions doit présenter des altérations visibles à l'attaque chimique Keines der Muster sollte sehenswerte Aenderungen nach Behandlung mit Chemikalien zeigen | Conforme Conformity Conforme Gemäss |
|  | Resistenza agli sbalzi termici Thermal shock resistance Resistance aux ecarts de température Temperaturwechselbeständigkeit | ISO 10545-5 | | Conforme Conformity Conforme Gemäss |
|  | Resistenza scivolosità Sliding resistance Resistance au glissement Rutschfestigkeit | DIN 51130 R | | R10 |
|  | Coefficiente d'attrito dinamico Wet dynamic coefficient of friction Coefficient de friction dynamique Reibungskoeffizient schlipfrigkeit (in bewegung) | Bot 3000 E | DCOF ≥ 0,42 | > 0,42 |
|  | Moderata variazione Moderate variation Variation modérée Maessige abweichung | | | V3 |

 V1
Aspetto uniforme
Uniform appearance
Aspect uniforme
Einheitliches aussehen

 V2
Lieve variazione
Slight variation
Légère variation
Geringe abweichung

 V3
Moderata variazione
Moderate variation
Variation modérée
Maessige abweichung

 V4
Forte stonalizzazione
Substantial variation
Effet dénuancé très accentué
Akzentuierte variation

GAZZINI
CERAMICA & DESIGN

MADE IN ITALY


GAZZINI
CERAMICA & DESIGN

Ceramica Gazzini SpA - via Milano, 2 - 42048 Rubiera (Reggio Emilia) Italy
Tel. 0522 628112 - 627518 - 628639 - Fax 0522 628437
info@ceramicagazzini.it - www.ceramicagazzini.it

C.F. E P.I. 00140380353 - REG. IMP. REGGIO EMILIA N° 00140380353
CAPITALE SOCIALE I.V. € 546.000,00

"Campione gratuito di modico valore F.c. Iva art.2 3°comma Lettera d D.P.R. 633/72 succ. mod."